

Positionnement de la robinetterie
EG Trémie 2 Sud

Positionnement de la robinetterie
en colonne et en sortie de colonne

Principe de raccordement
batteries VAC et cassettes

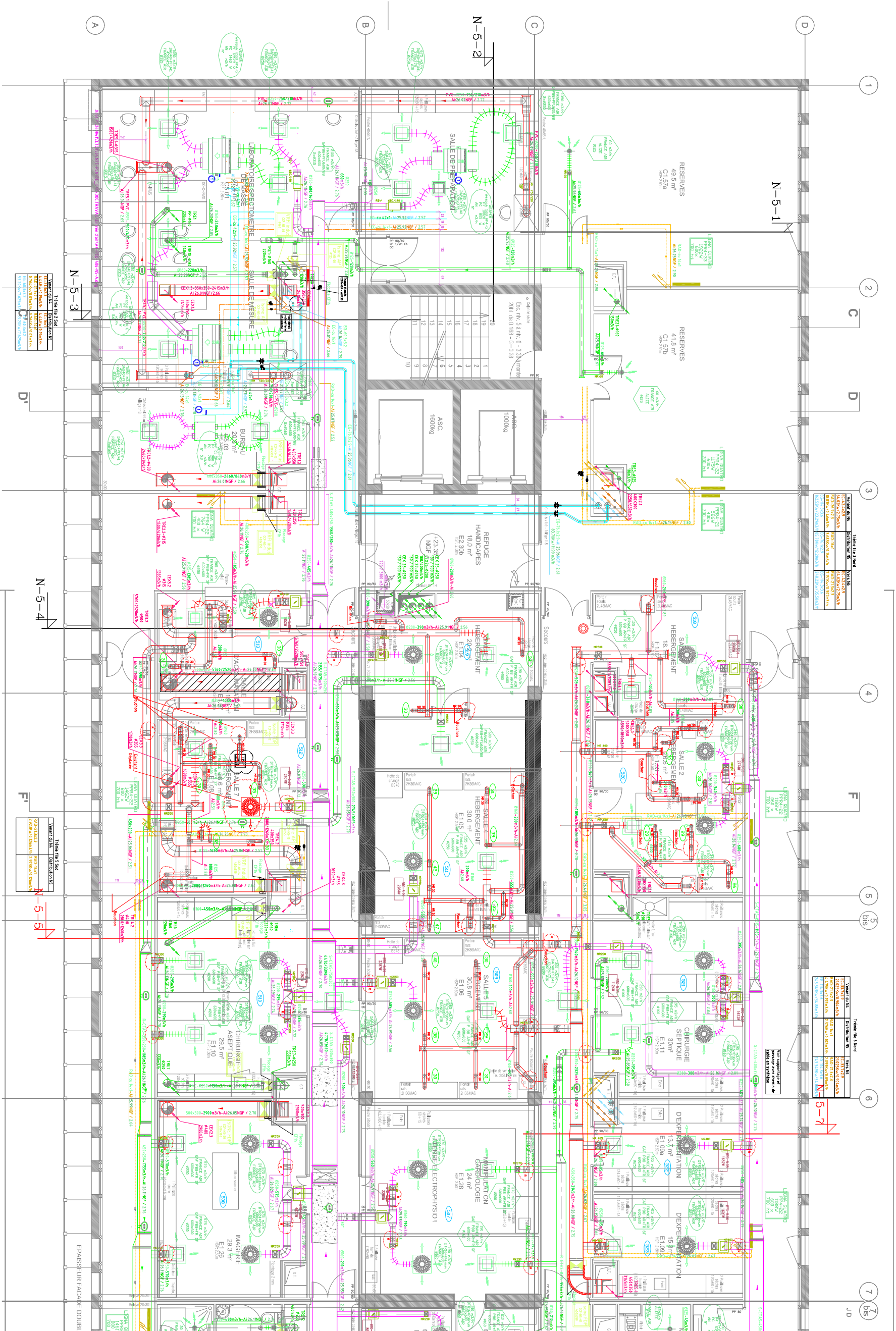
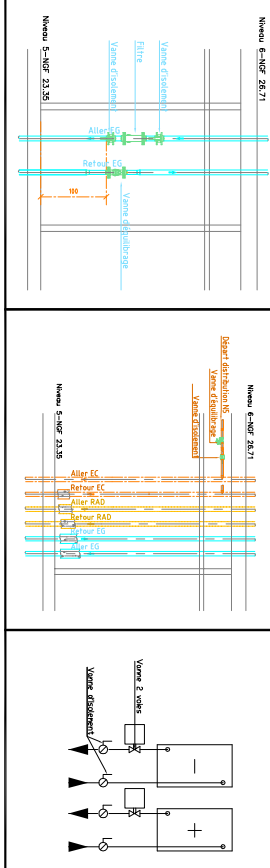


Table 104 3 Nord

Trémie 3 N	Trémie 3 S	Trémie 3 N	Trémie 3 S
EG-3-1-1	EG-3-1-2	EG-3-1-3	EG-3-1-4
EG-3-1-5	EG-3-1-6	EG-3-1-7	EG-3-1-8
EG-3-1-9	EG-3-1-10	EG-3-1-11	EG-3-1-12
EG-3-1-13	EG-3-1-14	EG-3-1-15	EG-3-1-16
EG-3-1-17	EG-3-1-18	EG-3-1-19	EG-3-1-20

Table 104 4 Nord

Trémie 4 N	Trémie 4 S	Trémie 4 N	Trémie 4 S
EG-4-1-1	EG-4-1-2	EG-4-1-3	EG-4-1-4
EG-4-1-5	EG-4-1-6	EG-4-1-7	EG-4-1-8
EG-4-1-9	EG-4-1-10	EG-4-1-11	EG-4-1-12
EG-4-1-13	EG-4-1-14	EG-4-1-15	EG-4-1-16
EG-4-1-17	EG-4-1-18	EG-4-1-19	EG-4-1-20

Table 104 5 Sud

Trémie 5 S	Trémie 5 N	Trémie 5 S	Trémie 5 N
EG-5-1-1	EG-5-1-2	EG-5-1-3	EG-5-1-4
EG-5-1-5	EG-5-1-6	EG-5-1-7	EG-5-1-8
EG-5-1-9	EG-5-1-10	EG-5-1-11	EG-5-1-12
EG-5-1-13	EG-5-1-14	EG-5-1-15	EG-5-1-16
EG-5-1-17	EG-5-1-18	EG-5-1-19	EG-5-1-20